

CORNISH GEMS

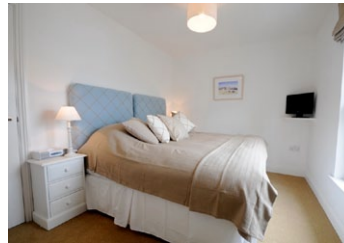
luxury holiday homes

Call 0844 800 2813 | enquiries@cornishgems.com

Location | Lelant near St. Ives

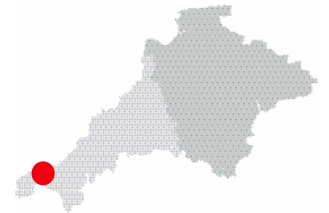
Bay Tree Cottage

Sleeps 4



Prices	Lowest	£370	Number of Bedrooms				Number of Bathrooms		
	Highest	£1132	King	Double	Zip & Lock	Cot	Standard	En-suite	WC
Short Breaks Available*	Yes		1	1	1	1		1	

*Please note short breaks are available with CG from 1st October through to 31st March excluding Xmas/new Year and Half Term holidays



Property Key Features

- 5 star accredited
- Parking
- Close to beaches
- Close to branch line
- Wifi
- Fridge/freezer
- Washer/dryer
- Dishwasher
- Microwave
- Large conservatory
- Patio & rear garden
- Cot & highchair
- Children welcome
- LCD TV's
- iPod docks/CD player
- DVD player

Bay Tree Cottage is a modern two bedroom granite cottage that cleverly brings a modern influence to the traditional fishermen's cottages of yesteryear. Bay Tree Cottage is situated in the prime location that is Saltings Reach, on the outskirts of St. Ives.

This stylish and well equipped holiday cottage has a fabulous, spacious conservatory leading to its split level patio area where you can enjoy some alfresco dining throughout your stay and on request, offers a super king or twin bed.

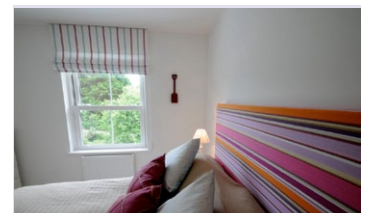
Bay Tree Cottage is the perfect choice if you want to stay in a quiet and peaceful location

but still be ideally located for easy access for sampling the delights of St. Ives and exploring the West Cornwall peninsular.

Bay Tree Cottage is next door to Grebe Cottage and Pear Tree Cottage so the perfect choice for two families who want to be close but independent from each other.

“We wanted to be close to St. Ives but avoid the hustle and bustle of staying in the town. Bay Tree Cottage was just perfect.”

Mrs. Beecher



[Click here](#)
to view full details and book