

CORNISH GEMS

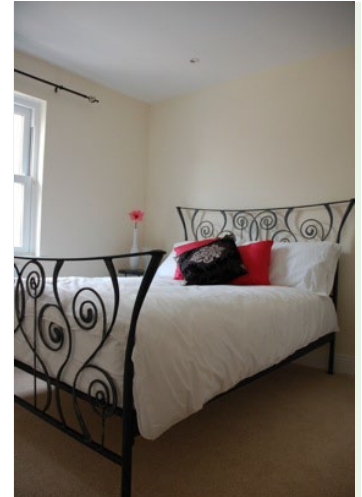
luxury holiday homes

Call 0844 800 2813 | enquiries@cornishgems.com

Location | St Ives

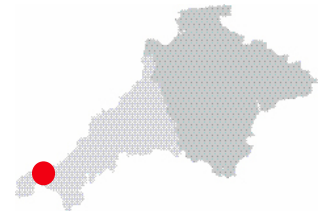
The Eider House

Sleeps 10



Prices	Lowest	£561	Number of Bedrooms				Number of Bathrooms		
			King	Double	Twin	Cot	Standard	En-suite	WC
	Highest	£2059							
Short Breaks Available*	No		1	1	3		2	1	1

*Please note short breaks are available with CG from 1st October through to 31st March excluding Xmas/new Year and Half Term holidays



Property Key Features

- Children welcome
- Dogs welcome
- Parking for 2-3 cars
- Wifi
- Rear patio garden
- DVD player
- iPod docking station
- French doors from lounge leading to patio
- Sea views
- Washing machine
- Tumble dryer
- Double electric oven
- Dishwasher
- TV with freeview
- Heated towel rails
- Stylish throughout

This large, 3 storey, modern detached holiday home has been well equipped throughout to create a splendid coastal retreat. It is situated adjacent to the well renowned Hayle Estuary, an RSPB nature reserve and offers great accessibility to some of the finest golden beaches and tourist attractions West Cornwall has to offer. With 5 bedrooms and 3 bathrooms, The Eider House is perfect for families or large groups and dogs are welcome. It provides parking and great accessibility to St. Ives town centre and its multitude of golden beaches. The frequent branch line train is only 5 minutes walk away and arrives in St. Ives in 8 minutes, offering some breathtaking coastal views along the way.

The Eider House is perfect for families or large groups and dogs are welcome. The property has a large rear enclosed patio garden with plenty of garden furniture including tables, chairs, swing seat, large parasol, 2 sun loungers and a charcoal BBQ.

The Eider House is located 1 mile from Porthkidney Beach, a picturesque beach adjoining the Hayle Estuary which is dog friendly all year round.

“Beautiful house with easy access to St Ives. We will be back next year!”

The Morrison Family



[Click here](#)
to view full details and book