

CORNISH GEMS

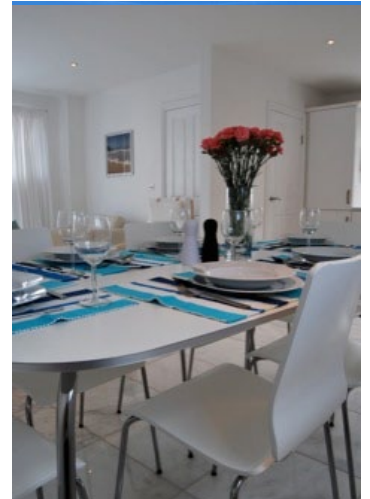
luxury holiday homes

Call 0844 800 2813 | enquiries@cornishgems.com

Location | Lelant near St. Ives

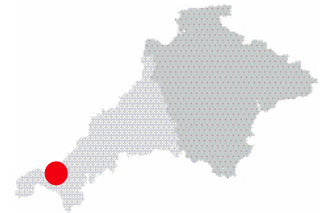
White Sands

Sleeps 5



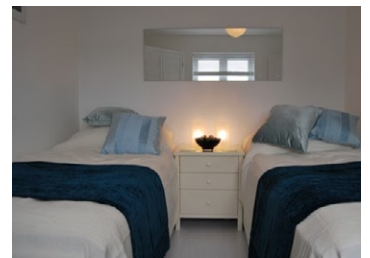
Prices	Lowest	£383	Number of Bedrooms				Number of Bathrooms		
	Highest	£1269	King	Zip & Lock	Single	Cot	Standard	En-suite	WC
Short Breaks Available*	Yes		1	1	1	1	1	1	1

*Please note short breaks are available with CG from 1st October through to 31st March excluding Xmas/new Year and Half Term holidays



Property Key Features

- Children welcome
- Iron and ironing board
- Dishwasher
- Cot and highchair
- Parking
- Hairdryers provided
- DVD player
- Rear patio garden
- Adjacent to Estuary
- Washing machine
- Bose music system
- Integral garage
- Close to beaches
- Tumble dryer
- Juliet balcony
- iPod dock

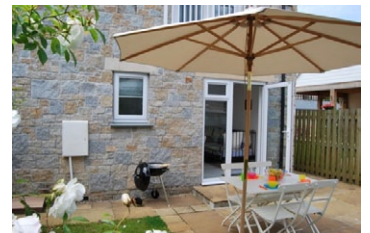


White Sands is perfect for a family or one or two couples looking for a stylish holiday home in a quiet location with easy access to the delights that St. Ives has on offer, from its fabulous beaches through to multitude of galleries and fine restaurants.

White Sands is a splendid three storey detached town house which sleeps up to 5 people. The main living accommodation is on the middle floor with Juliet balcony overlooking the patio garden. The property is cleverly interior designed throughout in white show casing an interesting collection of professional photography, most of the local area itself. White Sands offers quality

accommodation for up to 5 guests offering a fresh, modern and welcoming feel. St. Ives is a short drive away, or the Saltings Reach branch line train is a 5 minute walk away. You arrive at Porthminster Beach, St. Ives in 8 minutes and sample some breathtaking coastline along the way.

“Modern, stylish home in a lovely development with everything we could possibly need”
Ruby Hull



Click here
to view full details and book